

DV-36P Installation Procedure for Windows XP

To install the DV-36P software onto a machine running Windows XP requires a special installation procedure. We have found that the DV-36P works best when it is connected directly to your computer and not to a USB Hub.

Please note: If you have a previous version of the software installed on your machine please remove it before continuing, failure to do so will result in the DV-36P not functioning correctly. First, do an uninstall using the Control Panel “Add/ Remove” software feature. Then manually search for ezusbw2k.inf and ezusb.sys and delete all copies of these files. Once this is done you are ready to reinstall the program.

****If you have downloaded the installation program****

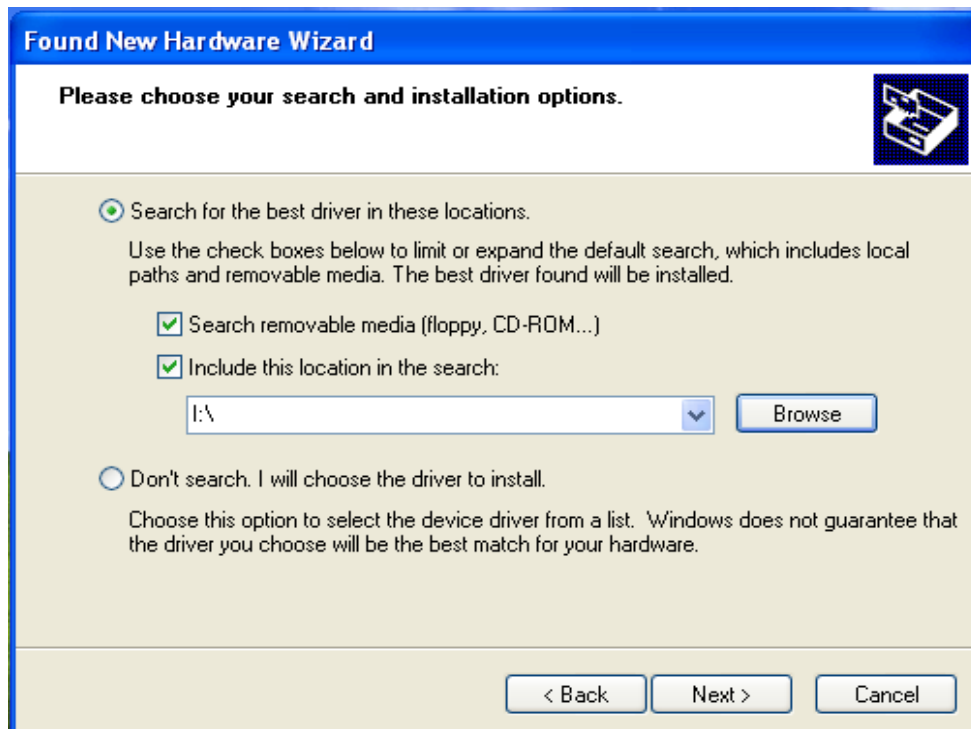
In all places below where the instructions call for the CD-ROM if you have downloaded the file please search in that location in order to complete the installation.

To begin:

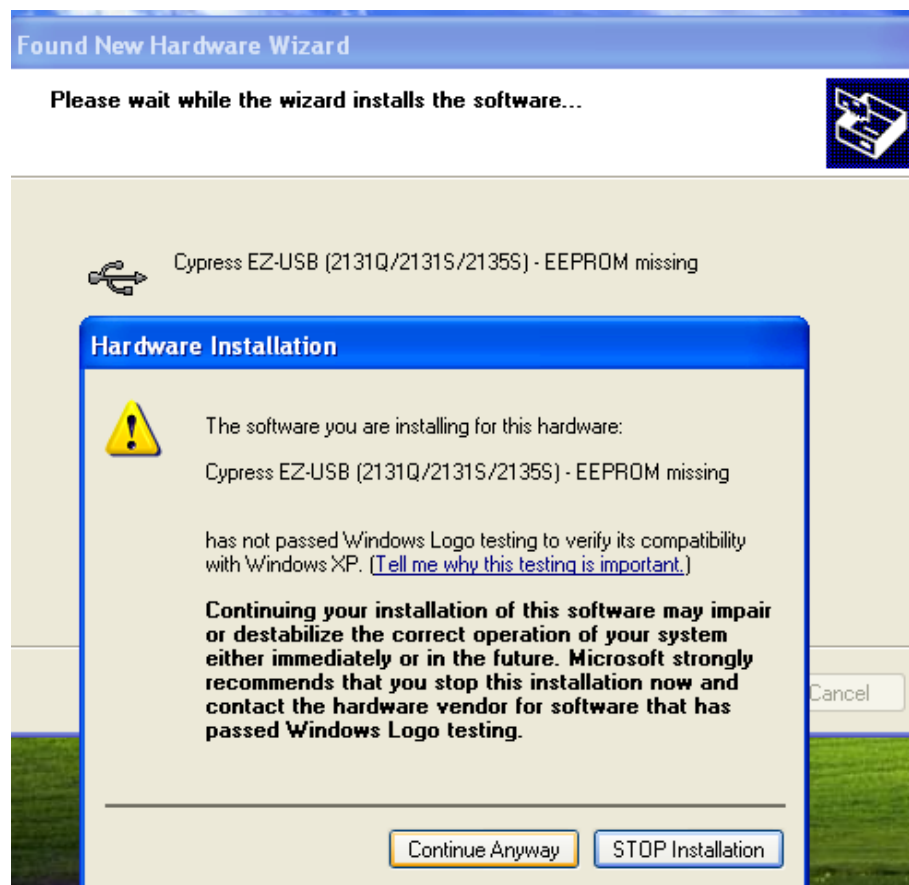
1. Click Start→My Computer→Select CD-ROM→Copy ezusbw2k.inf to directory of C:\Windows\system32\drivers
2. Start→My Computer→Select CD-ROM→Copy ezusb.sys to directory of C:\Windows\system32\drivers
3. Connect DV-36P USB device to PC, your system will auto-detect it and will display the screen below, Select “Install from a list specific location [Advanced],” and click “Next” button.



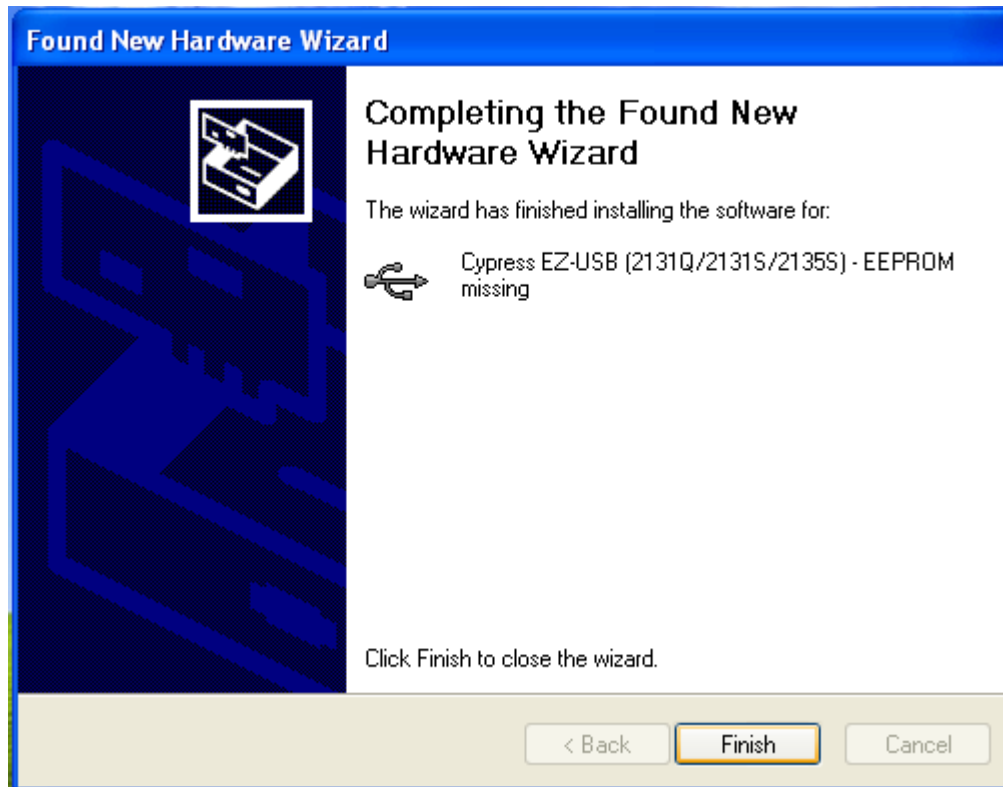
4. Then system will prompt the screen below: select “search for the best driver in these locations,” Click “Next>” button.



5. When the following error pops up click “Continue Anyway.” This does not create a problem for running the software correctly it arises because the software has not been verified by Windows™.



6. Click finish to move to the installation wizard.



7. Install DV-36P program setup file of setup.exe. (Installation may require you to manually click on the file setup.exe on the CD-ROM)

8. The installation wizard will walk you through the installation of the software.



9. Once your computer has been restarted you will now be able to use the DV-36P.