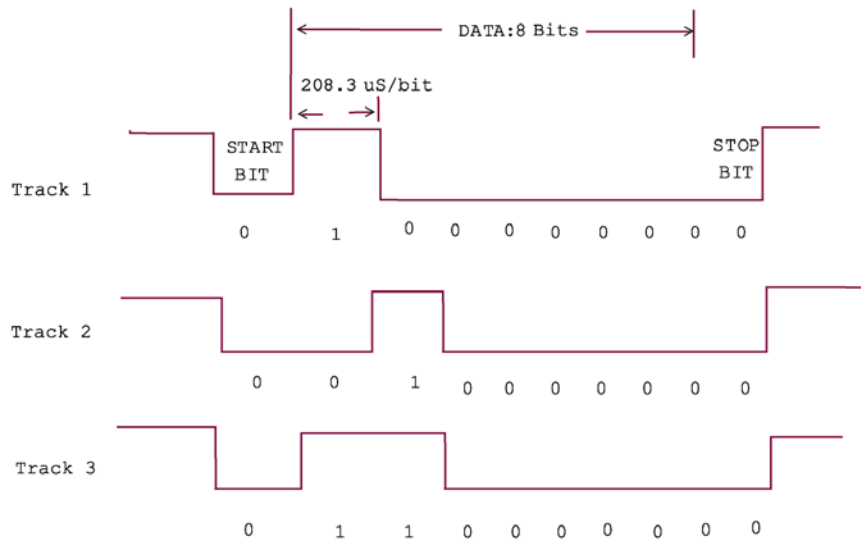




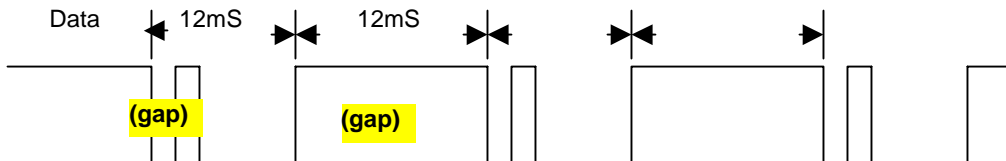
DV-66F, Function Selector

Operating Voltage	3 - 5.5V
Operating Temperature	32 - 140°F (0 - 60°C)
Serial Port Specs	Baud rate 4800 bits/sec, Null check, 8 bits, 1 stop bit
Dimensions	2.06"(L) x 2.56"(W) x 0.62"(H)

Data Timing Chart:



Transmit Waveforms

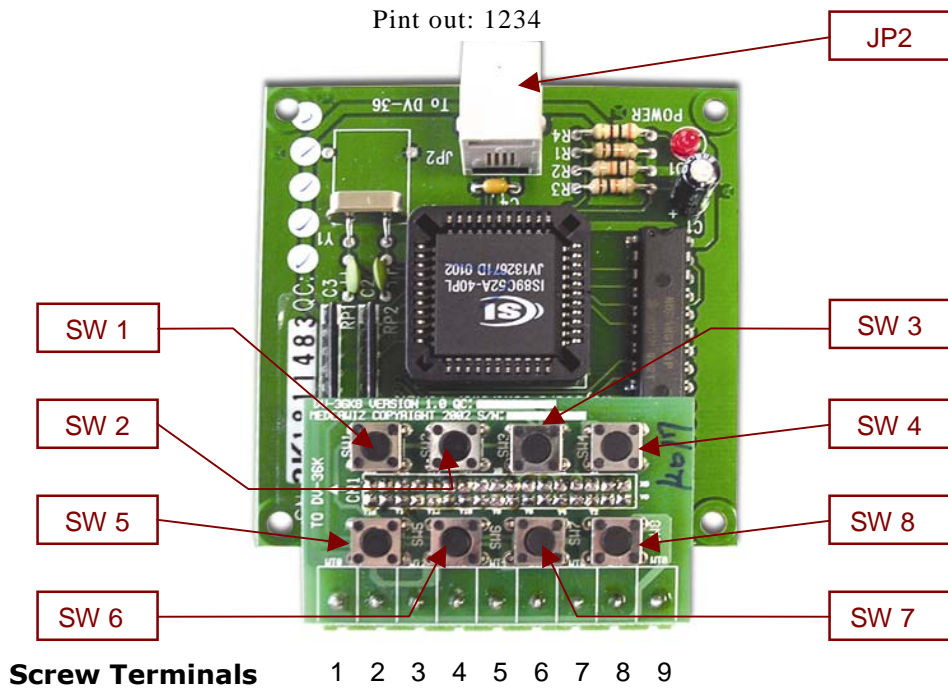


1. Connect ribbon cable from JP1 on the DV-66F to key switches
2. Connect 4P4C cable between DV-66F (JP2) and DV-66B
3. Follow the matrix table below to select your tracks

DV-66F Matrix Table

	X0	X1	X2	X3	X4	X5	X6	X7	X8	X9	X10	X11	X12	X13	X14	X15
Y0	SW1	SW2	SW3	SW4	SW5	SW6	SW7	SW8								

Pin	JP	Cable	Function
1	JP2	DV-66F	Ground
2	JP2	DV-66F	TX
3	JP2	DV-66F	RX
4	JP2	DV-66F	+5 VDC



Pin	Description
Pin 1	Common
Pin 2	Switch 1 = Menu Mode
Pin 3	Switch 2 = Composite/VGA toggle switch
Pin 4	Switch 3 = OSD on (OSD will be opened, but this change will NOT be saved in Flash memory, just one time open).
Pin 5	Switch 4 = Volume Up (+)
Pin 6	Switch 5 = Repeat Mode
Pin 7	Switch 6 = Track #1 playing in Repeat Mode; Track #2 playing in Menu mode (Track #1 is Menu Playing file)
Pin 8	Switch 7 = OSD Off
Pin 9	Switch 8 = Volume Down (-)