



**DV - 8809**

**Quick Installation Guide**

**Windows Vista**

**Windows XP MCE**

**Windows XP**

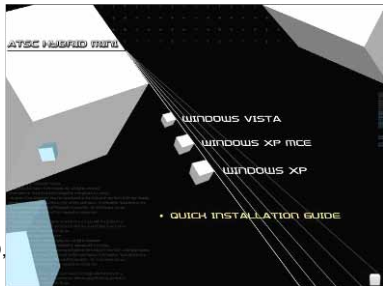
# GETTING STARTED

Connect your antenna/cable for digital and/or analog TV to the antenna jack.

For more information on compatible antennas, please refer to <http://www.antennaweb.org/aw/Welcome.aspx>

Insert the installation CD into your CD/DVD drive, and the installation menu should load automatically. If your system is running Windows Vista, click on **Windows Vista**. If your system is running Windows XP MCE, click **Windows XP MCE**. If your system is running Windows XP, click **Windows XP**.

**Note:** If the Autostart program does not appear automatically when you insert your Installation CD, start it manually by running the **InstallCD.exe** file located on the Installation CD, or by clicking the Start button, choosing **Run...**, and typing in **D:\InstallCD.exe**. (if D: is your CD-ROM drive)



## Windows Vista – Before installing software

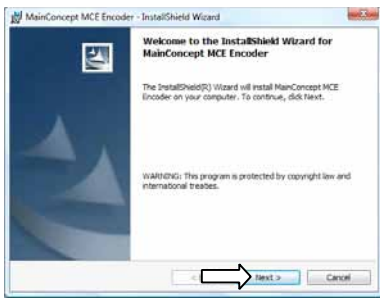
When you see the following message on your screen, click on **Don't show this message again for this device**.



## Windows Vista - Step 1: Encoder Installation



1. Click on **Install MCE Encoder (32-bit)** from the installation menu.

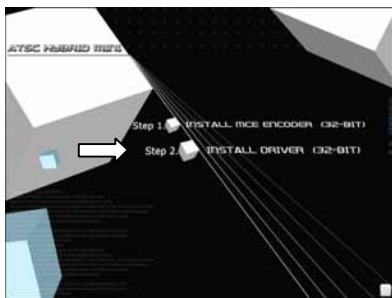


2. Click **Next** through the prompts.



3. After the MCE Encoder finishes installing, click **Finish**.

## Windows Vista – Step 2: Install Drivers



1. Click on **Install Driver(32-Bit)** from the installation menu.

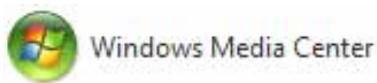


2. Click **Next**.



3. After the drivers finish installing, click **Finish**.

## Windows Vista – Step 3: Media Center Setup

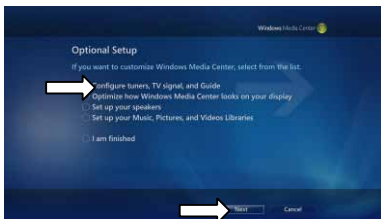


1. Click on the **Media Center** icon from the Start Menu or the QuickStart bar.

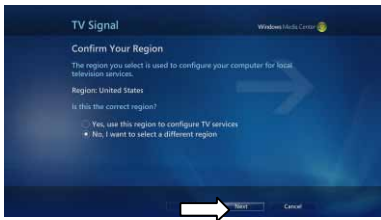
2. From the welcome screen, select **Custom setup** and click **OK**.



3. Click **Next** and follow the onscreen instructions to set up Media Center.



4. When you reach the **Optional Setup** screen, select **Configure tuners, TV signal, and Guide** and click **Next**.



5. If you are in the currently displayed region, select **Yes, use this region to configure TV services** and click **Next**. Otherwise, click **No, I want to select a different region**, click **Next**, and choose your region from the list that appears then click **Next**.



6. Select **Configure my TV signal automatically (Recommended)**. Click **Next**.

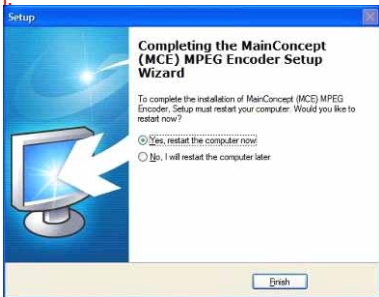
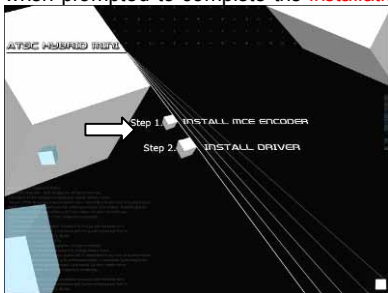


7. This completes setup of the TV tuner in Media Center – you can continue to set up the rest of Media Center as you wish.

## Windows MCE – Step 1: Encoder Installation

For Windows MCE, you must install the MPEG-2 encoder; this is required to watch analog TV or video in Windows MCE.

Click on **MCE Encoder** to start the encoder setup program. Click **Next** or **Yes** when prompted to complete the **installation**.

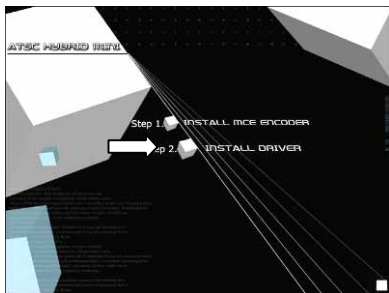


After installing the encoder, you will be asked to restart your computer. Select **Yes, restart the computer now** and click **Finish**.

## Windows MCE - Decoder Installation Note

For Windows MCE, you **must** install an MCE Certified MPEG-2 decoder (also known as a DVD decoder) in order to watch and record TV in Windows MCE. This DVD decoder is not included on the installation CD. To install a DVD decoder, you can install software such as CyberLink PowerDVD, InterVideo XPack, Sonic CinePlayer, nVidia DVD Decoder or other such product that includes a DVD decoder. Please contact our Technical Service Dept. at [aotsd@aopen.com](mailto:aotsd@aopen.com) if you have any questions.

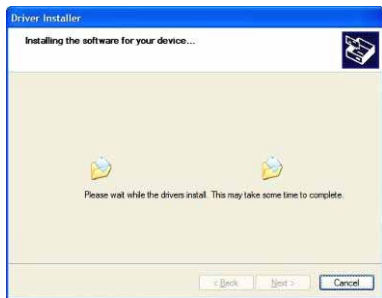
## Windows MCE – Step 2: Install Drivers



1. Click on **Install Driver** from the installation menu that opens.



2. Click **Next**.



3. The drivers will now install. This may take a few minutes.



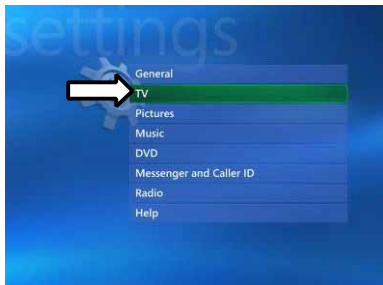
4. Driver installation is complete. Click **Finish**.

## Windows MCE – Step 4: Media Center Setup

Double-click the **My TV** icon on your desktop to start Media Center.



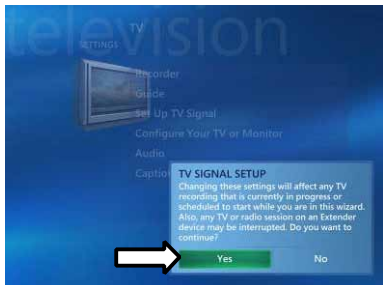
Click on **Settings**.



Now click on **TV**.



Click on **Set Up TV Signal**.



A warning message will appear. Click **Yes**.



Click **Next**.



Select **Yes, use this region to configure TV services** if your current region is displayed. If not, select **No, I want to select a different region**. Click **Next**.



If you chose to select your region, select your region from the list and

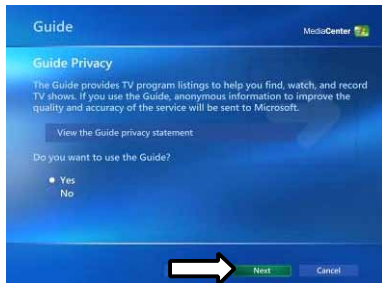


Click the circle next to **Set Up Guide Settings** and click **Next**.

click **Next**.



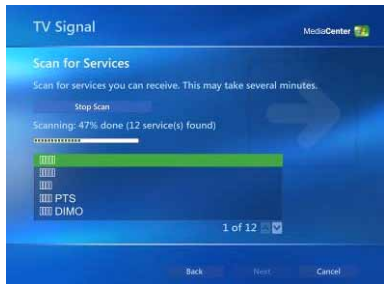
Click on **Next**.



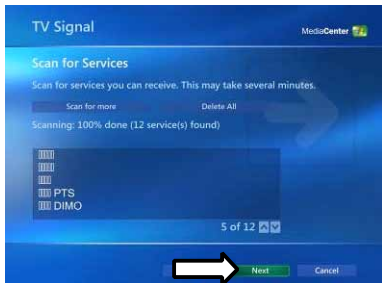
If you want to use the Media Center Guide, select **Yes** and follow the onscreen prompts. If not, select **No**. Click **Next**.



Click **Start Scan** to begin a channel scan.



Windows MCE will now scan for available channels in your area. This may take a few minutes.



When the scan is finished, click **Next**.



To watch TV, click on **My TV** from the main menu.

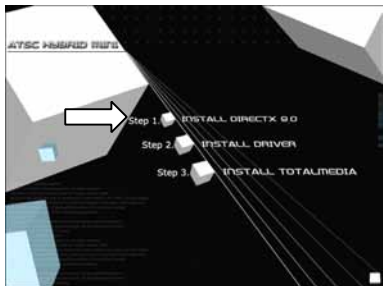


Click on **Live TV** and you can now start watching TV! For more details on how to use Media Center, consult your Windows MCE user manual or online help.

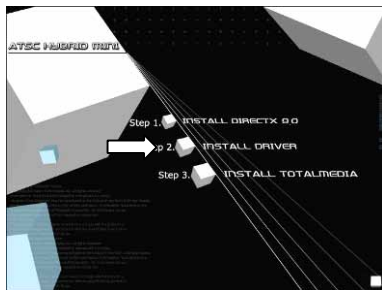
- ! If you are unable to scan any channels, make sure you have updated your copy of Windows MCE through Update Rollup 2 (KB900325) and the KB912067 Hotfix.

## Windows XP – Step 1: DirectX 9.0c Installation

Before installing your ATSC Hybrid Mini, it is necessary to install DirectX 9.0c or higher. Insert the installation CD and an installation menu should load automatically. Click on **Windows XP**, then click on **Install DirectX 9.0** and follow the prompts to install DirectX.



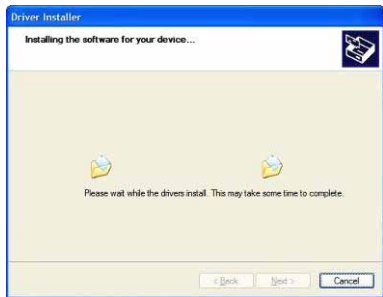
## Windows XP – Step 2: Driver Installation



1. Click on **Install Driver** from the installation menu.



2. Click **Next**.



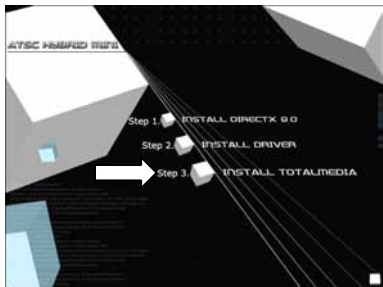
3. The drivers will now install. This may take a few minutes.



4. Driver installation is complete. Click **Finish**.

### Windows XP – Step 3: Install TotalMedia

Install the viewing application by clicking on **Install TotalMedia** and following the prompts to install the software.



To set up the TotalMedia software, please refer to **TotalMedia Setup** on **page 16**.

## Windows XP - TotalMedia Setup



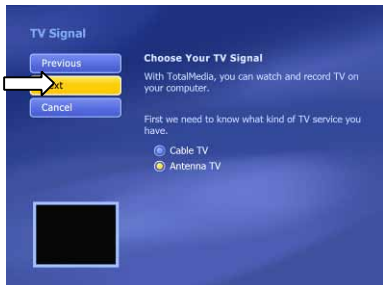
1. After starting TotalMedia, click on **TV**, and the setup wizard will appear. Click **Next** to continue.



2. Select your region, then click **Next**.

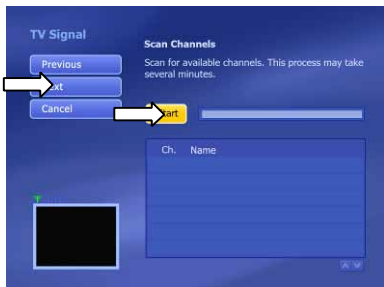


3. Select **713x BDA ATSC Tuner** and click **Next**.

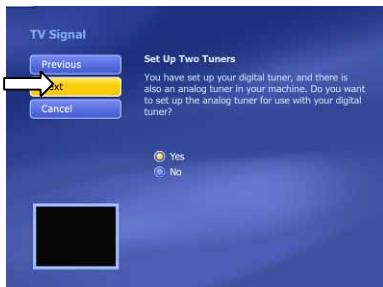


4. Choose how you receive your digital TV signal, and click **Next**.





5. Click on **Start** to scan for available channels, and click **Next** when the scan finishes.



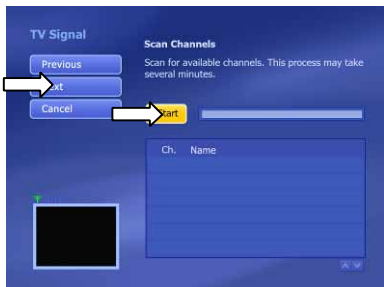
6. Select **Yes**, then click **Next**.



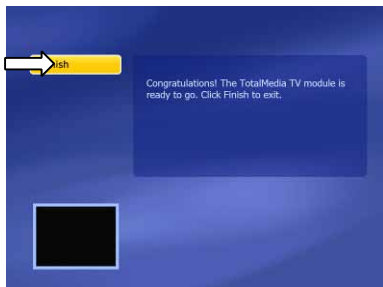
7. Select **Audio Pin Source**, then click **Next**.



8. Select how you receive your analog TV signal and click **Next**.



9. Again, click **Start** to scan for available channels. After the scan finishes, click **Next**.



10. This completes setup of TotalMedia. Click on **Finish**.

**Note:** If you receive digital TV from a different RF source than analog TV, you will need to manually connect the appropriate cable when watching TV.



